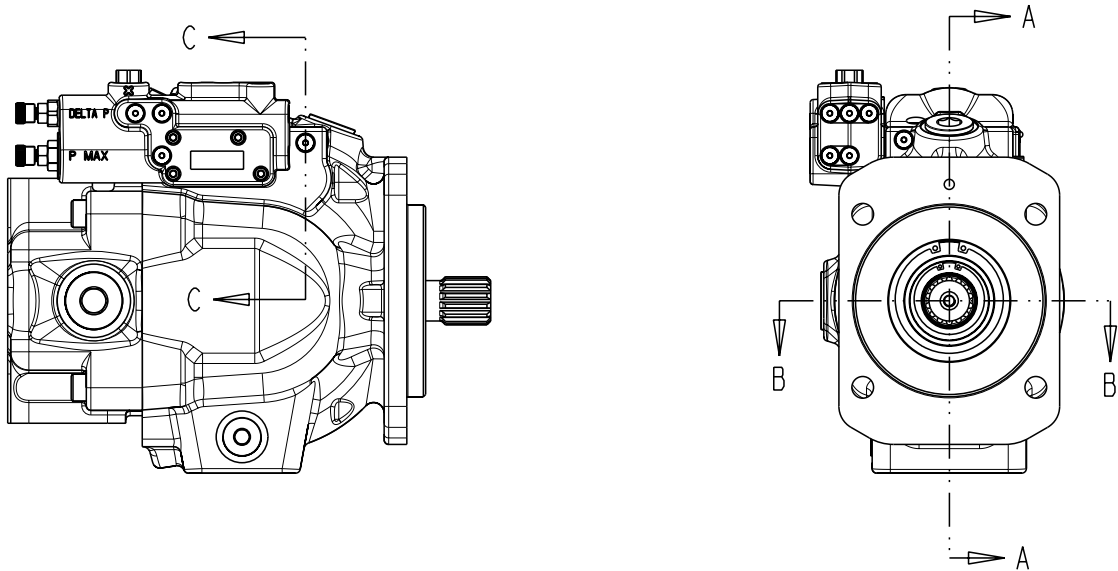
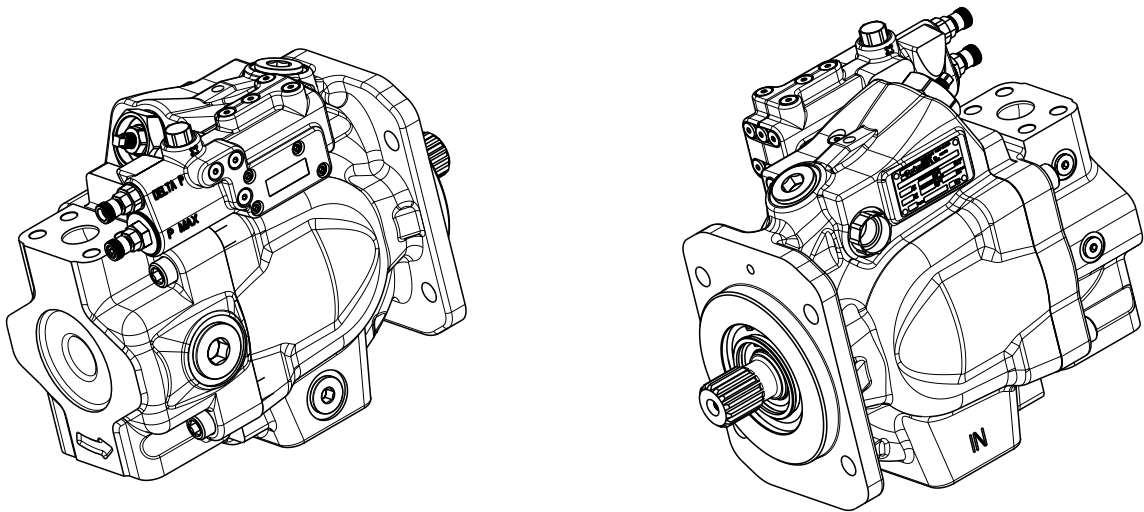


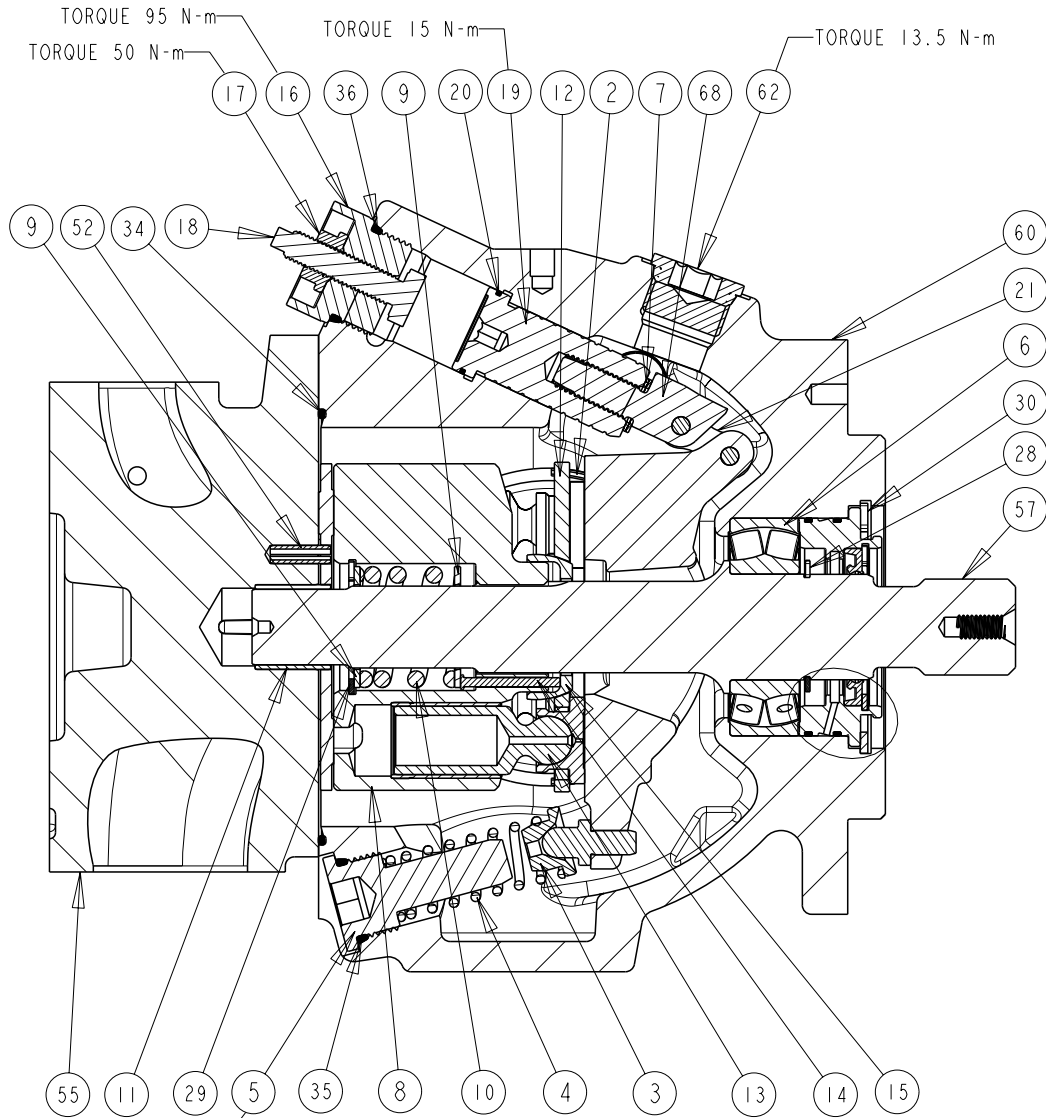
TITLE	DRAWING NUMBER	REVISION	STATUS	SHEET 1 OF 7
SERVICE PARTS P2060 DESIGN SERIES II	P2-060-0403	A	PR	



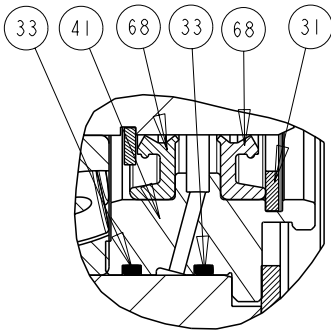
NOTES:
1. PUMP SHOWN IS A RIGHT HAND (CW) ROTATION PUMP. LEFT HAND (CCW) ROTATION PUMPS HAVE OUTLET GAUGE PORT REVERSED.



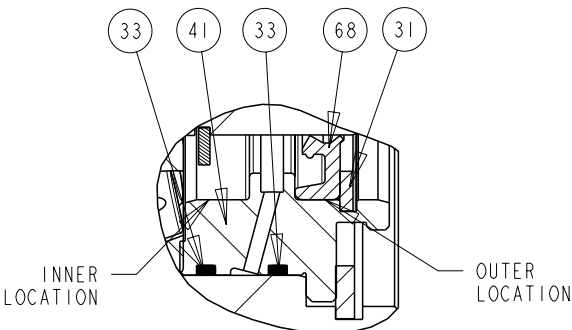
DRAWN BY	DATE	CHANGED BY	DATE	ECN NUMBER
E. BOONE	15APR02	B. LARKIN	20MAY02	133522



SECTION A-A
SCALE 2:5



DUAL SHAFT SEAL ASSEMBLY
P2-060-0210-02
SECTION A-A
SCALE 1:1



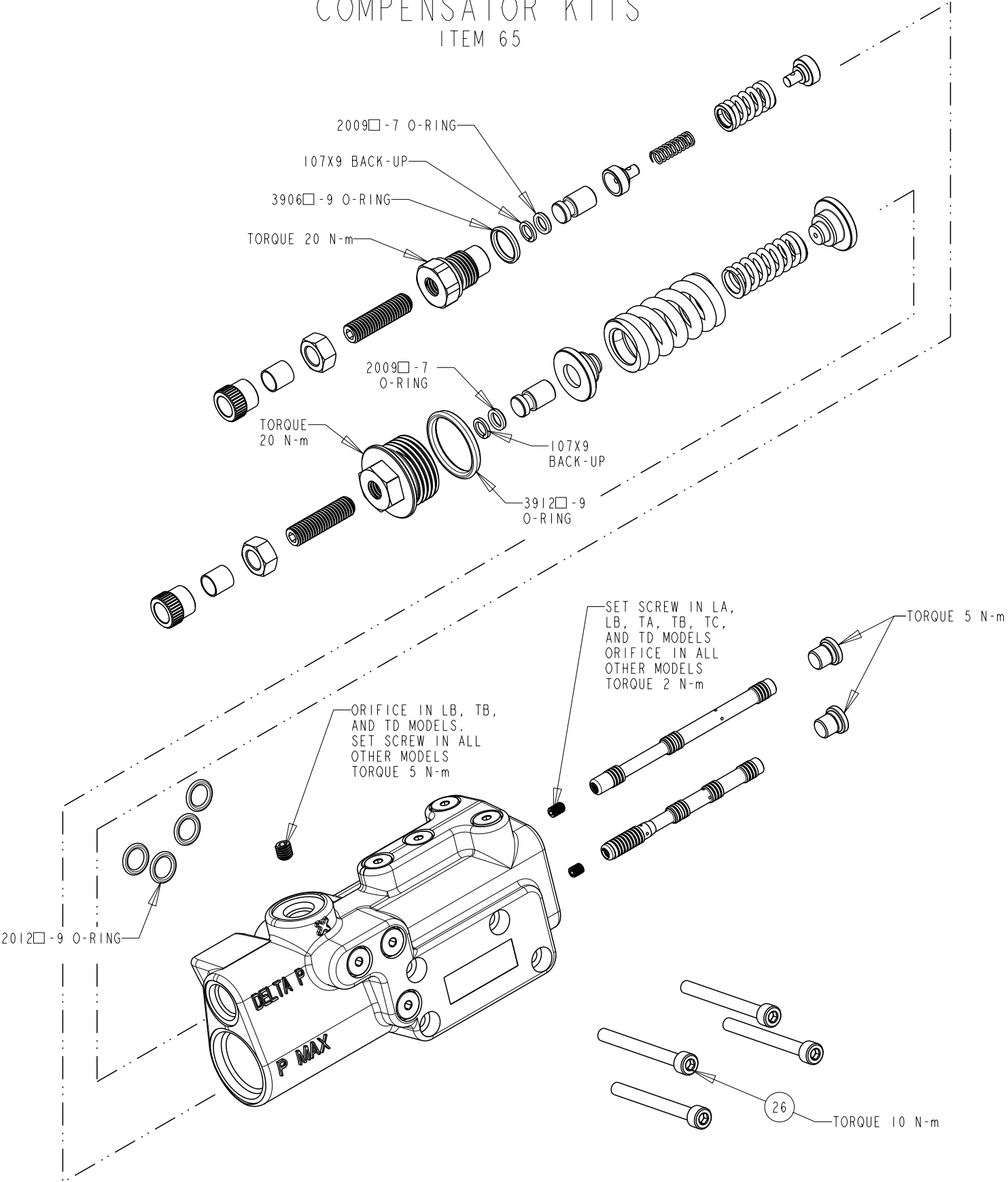
SINGLE SHAFT SEAL ASSEMBLY
P2-060-0210-01
SECTION A-A
SCALE 1:1



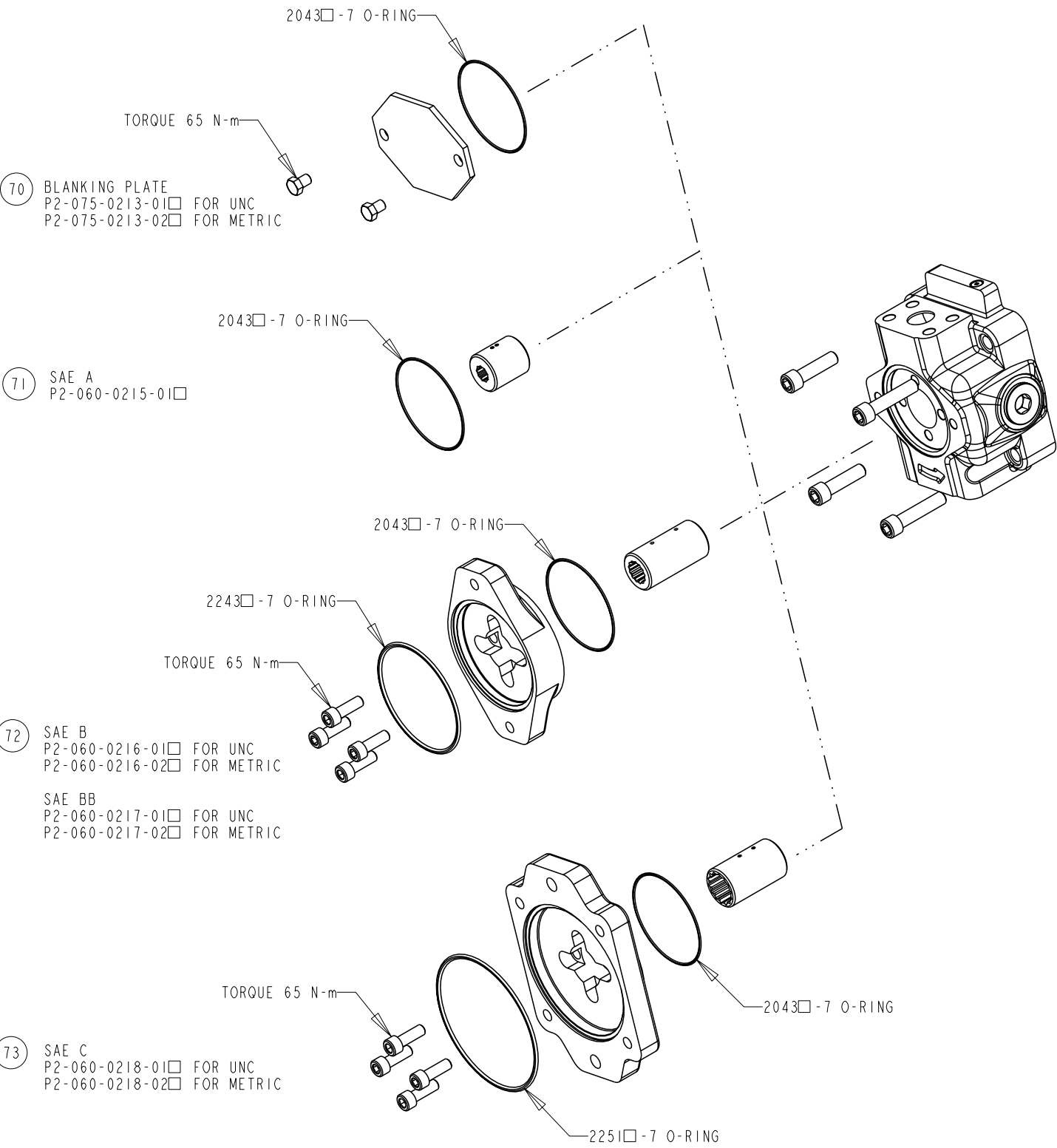
TITLE	SERVICE PARTS P2060 DESIGN SERIES II	DRAWING NUMBER	P2-060-0403	REVISION	A	STATUS	PR	SHEET 3 OF 7
-------	---	----------------	-------------	----------	---	--------	----	--------------

DRAWN BY	E. BOONE	DATE	15APR02	CHANGED BY	B. LARKIN	DATE	20MAY02	ECN NUMBER	133522
----------	----------	------	---------	------------	-----------	------	---------	------------	--------

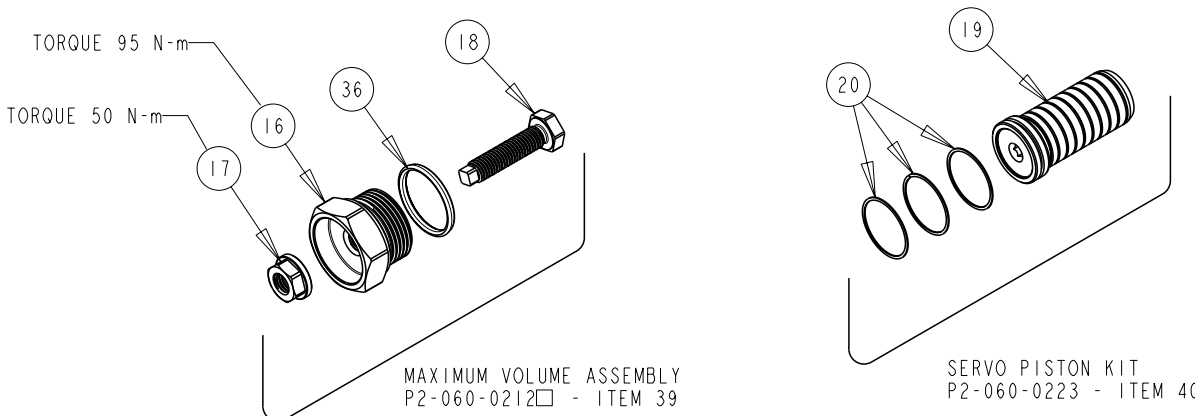
COMPENSATOR KITS ITEM 65



THRU DRIVE KITS

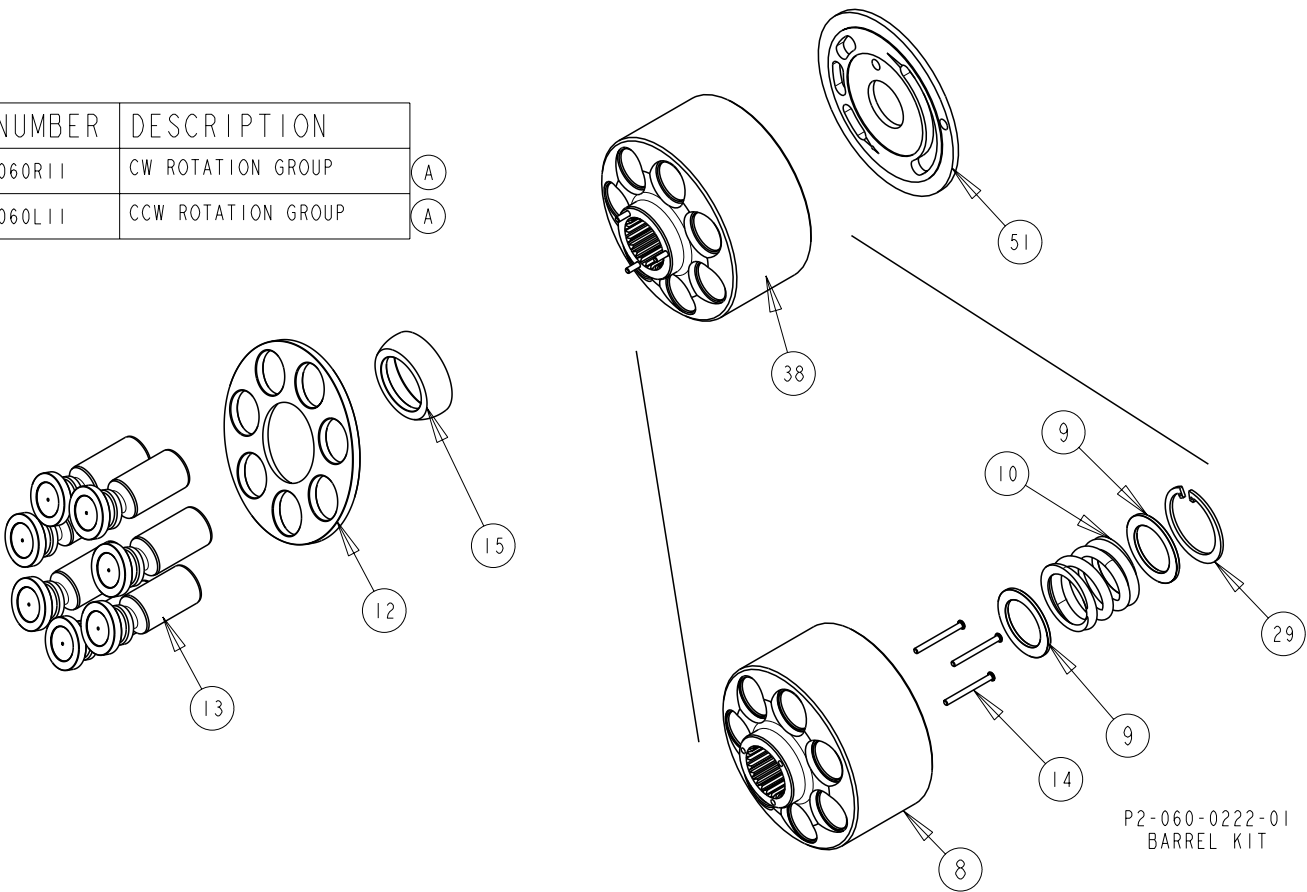


MAX VOLUME ASSEMBLY
SERVO PISTON KIT



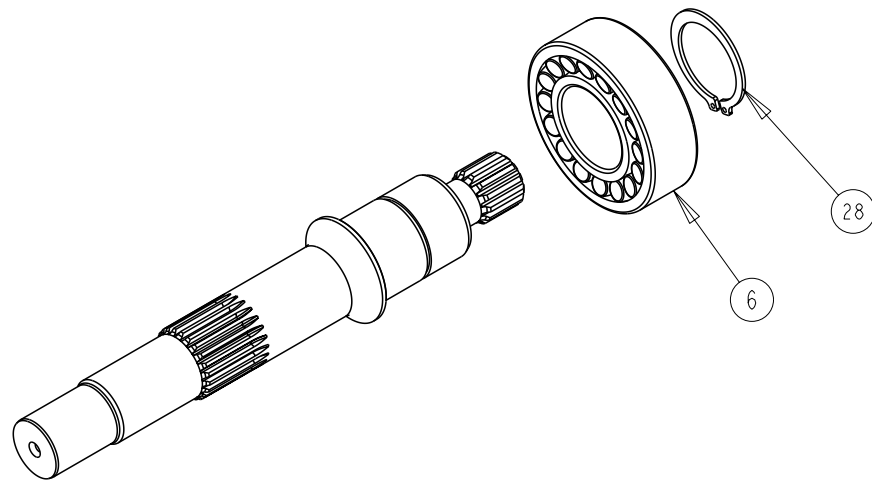
BARREL KIT AND
ROTATION GROUP KIT

PART NUMBER	DESCRIPTION	
RRKP2060R11	CW ROTATION GROUP	A
RRKP2060L11	CCW ROTATION GROUP	A



TITLE	DRAWING NUMBER	REVISION	STATUS	
SERVICE PARTS P2060 DESIGN SERIES 11	P2-060-0403	A	PR	SHEET 5 OF 7

SHAFT ASSEMBLY KITS
ITEM 57



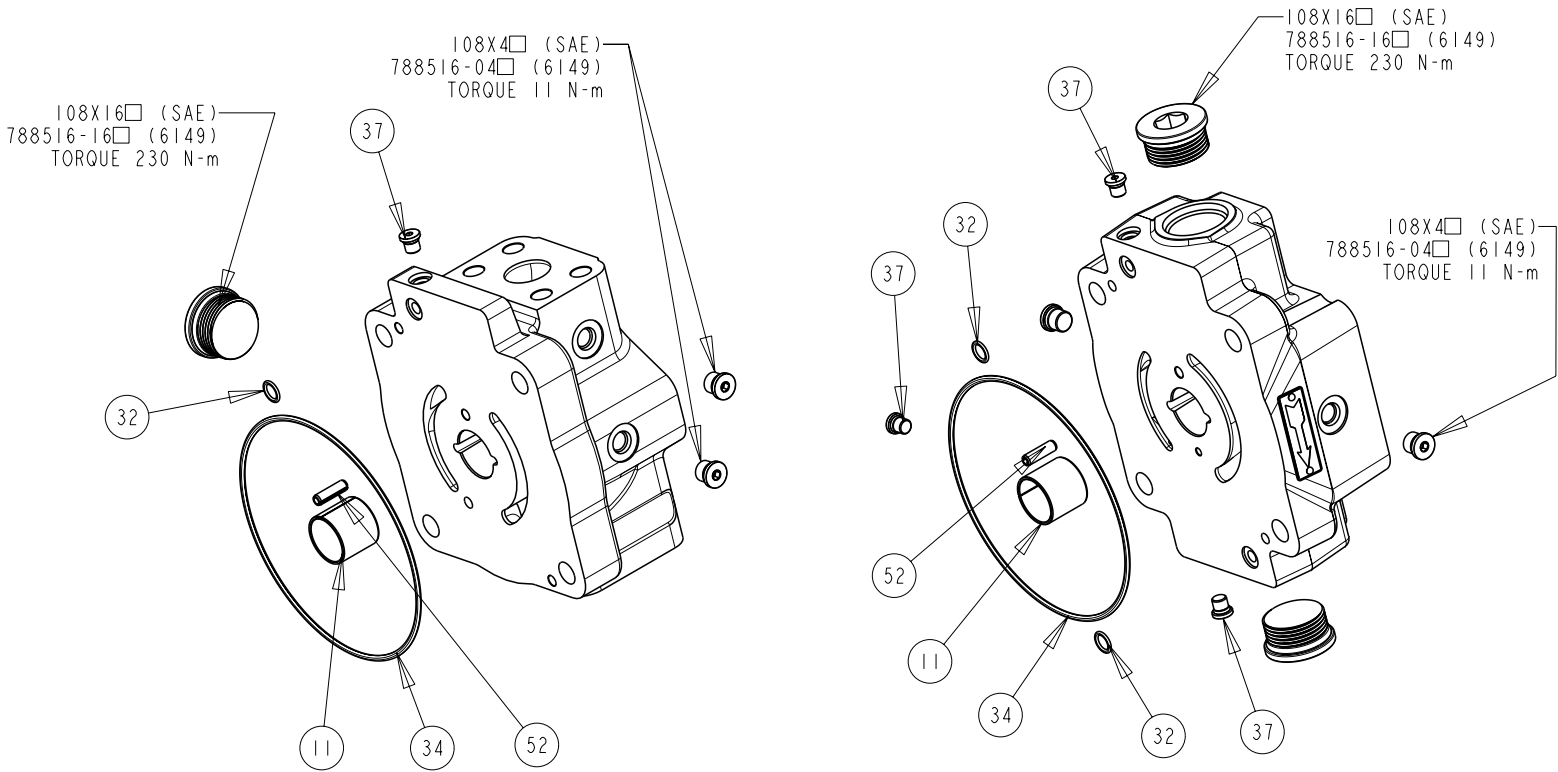
SHAFT ASSEMBLY INCLUDES SHAFT, BEARING, AND SNAP RING

SHAFT ONLY	SHAFT ASSY	DESCRIPTION
P2-060-3521	P2-060-0225-31	B SPLINE
P2-060-3522	P2-060-0225-32	B SPLINE THRU
P2-060-3523	P2-060-0225-33	BB SPLINE
P2-060-3524	P2-060-0225-34	BB SPLINE THRU
P2-060-3512	P2-060-0225-35	C SPLINE
P2-060-3525	P2-060-0225-36	C SPLINE THRU
P2-060-3528	P2-060-0225-41	B KEY
P2-060-3529	P2-060-0225-42	B KEY THRU
P2-060-3530	P2-060-0225-43	BB KEY
P2-060-3531	P2-060-0225-44	BB KEY THRU
P2-060-3532	P2-060-0225-45	C KEY
P2-060-3533	P2-060-0225-46	C KEY THRU
P2-060-3538	P2-060-0225-51	B SPLINE NO UNDERCUT
P2-060-3539	P2-060-0225-52	B SPLINE THRU NO UNDERCUT
P2-060-3540	P2-060-0225-53	BB SPLINE NO UNDERCUT
P2-060-3541	P2-060-0225-54	BB SPLINE THRU NO UNDERCUT
P2-060-3542	P2-060-0225-55	C SPLINE NO UNDERCUT
P2-060-3520	P2-060-0225-56	C SPLINE THRU NO UNDERCUT



DRAWN BY	DATE	CHANGED BY	DATE	ECN NUMBER
E. BOONE	15APR02	B. LARKIN	20MAY02	133522

COVER ASSEMBLY KITS
ITEM 55



SIDE PORTED
COVER

REAR PORTED
COVER

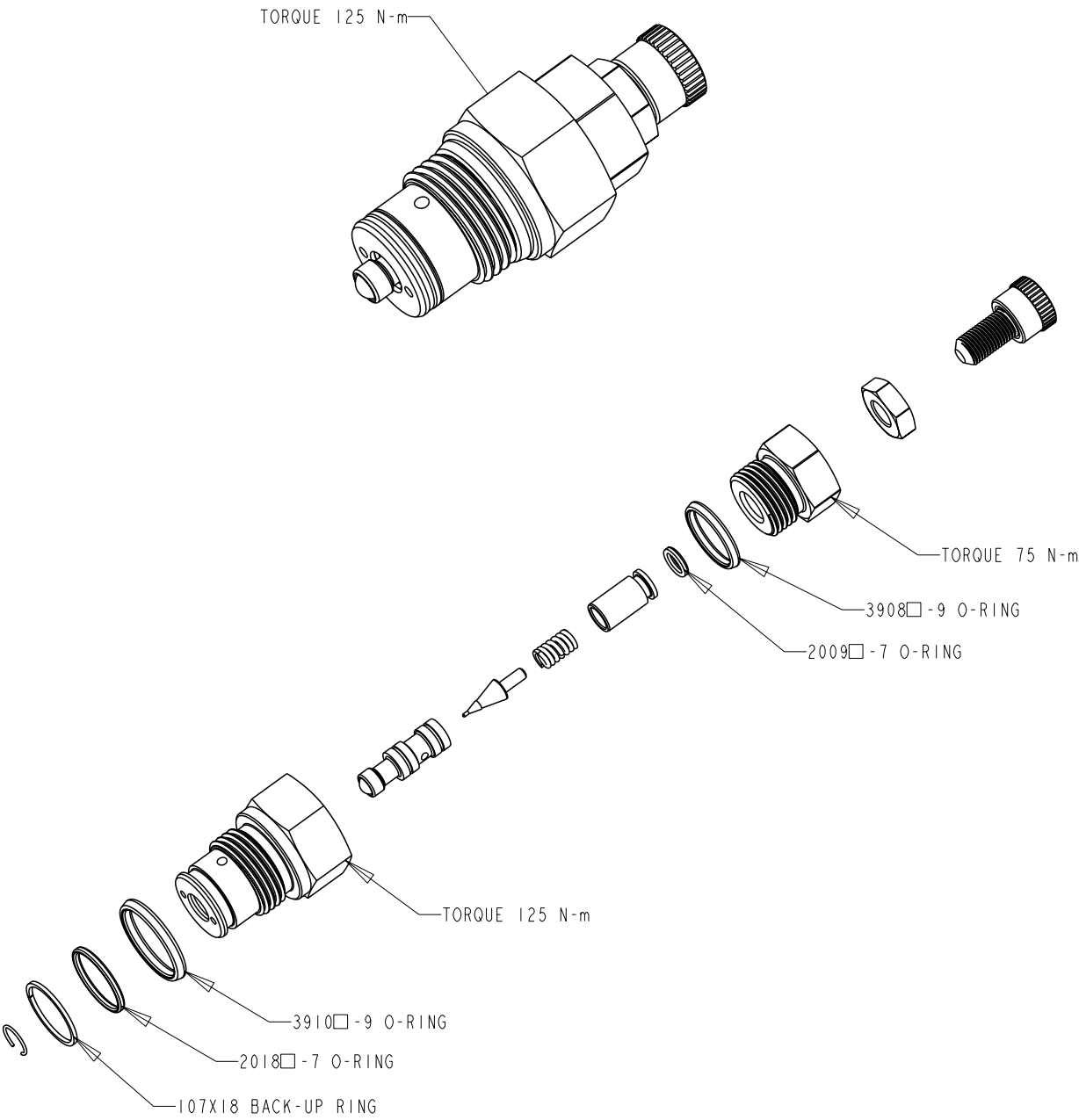
COVER ONLY	COVER ASSY	DESCRIPTION
P2-060-1013-01	P2-060-0226-01	SIDE PORTS, CCW, UNC
P2-060-1013-02	P2-060-0226-02	SIDE PORTS, CCW, UNC, THRU
P2-060-1013-03	P2-060-0226-03	SIDE PORTS, CCW, METRIC
P2-060-1013-04	P2-060-0226-04	SIDE PORTS, CCW, METRIC, THRU
P2-060-1014-01	P2-060-0226-05	SIDE PORTS, CW, UNC
P2-060-1014-02	P2-060-0226-06	SIDE PORTS, CW, UNC, THRU
P2-060-1014-03	P2-060-0226-07	SIDE PORTS, CW, METRIC
P2-060-1014-04	P2-060-0226-08	SIDE PORTS, CW, METRIC, THRU
P2-060-1017-01	P2-060-0226-17	REAR PORTS, CW, UNC
P2-060-1017-02	P2-060-0226-18	REAR PORTS, CW, METRIC
P2-060-1017-01	P2-060-0226-19	REAR PORTS, CCW, UNC
P2-060-1017-02	P2-060-0226-20	REAR PORTS, CCW, METRIC



TITLE	DRAWING NUMBER	REVISION	STATUS	
SERVICE PARTS P2060 DESIGN SERIES II	P2-060-0403	A	PR	SHEET 6 OF 7

TORQUE CONTROL CARTRIDGE P2-000-0803 □ - ITEM 63

A



DRAWN BY	DATE	CHANGED BY	DATE	ECN NUMBER
E. BOONE	15APR02	B. LARKIN	20MAY02	133522

ASSEMBLY, DIS-ASSEMBLY AND REPAIR NOTES

- DISASSEMBLY STEPS FOR ENTIRE PUMP
1. REMOVE COVER SCREWS AND COVER
 2. REMOVE ROTATING GROUP
 3. REMOVE SHAFT SEAL CARRIER
 4. REMOVE SHAFT
 5. REMOVE BIAS SPRING PLUG, SPRING AND RETAINER
 6. REMOVE MAX. VOLUME ASSY
 7. REMOVE SERVO PISTON ASSY
 8. REMOVE SWASHPLATE ASSEMBLY

- SHAFT SEAL REPLACEMENT
1. REMOVE SEAL CARRIER ONLY
 2. REMOVE OLD SEAL
 3. INSPECT SHAFT
 4. IF SHAFT IS WORN INSTALL NEW SEAL IN INNER LOCATION FOR SINGLE SEAL APPLICATIONS (SEE SHEET 1).
REPLACE SHAFT FOR DUAL SEAL APPLICATIONS



